

## How to Configure Windows Mail to use the Arrowmail Smarthost to send Emails

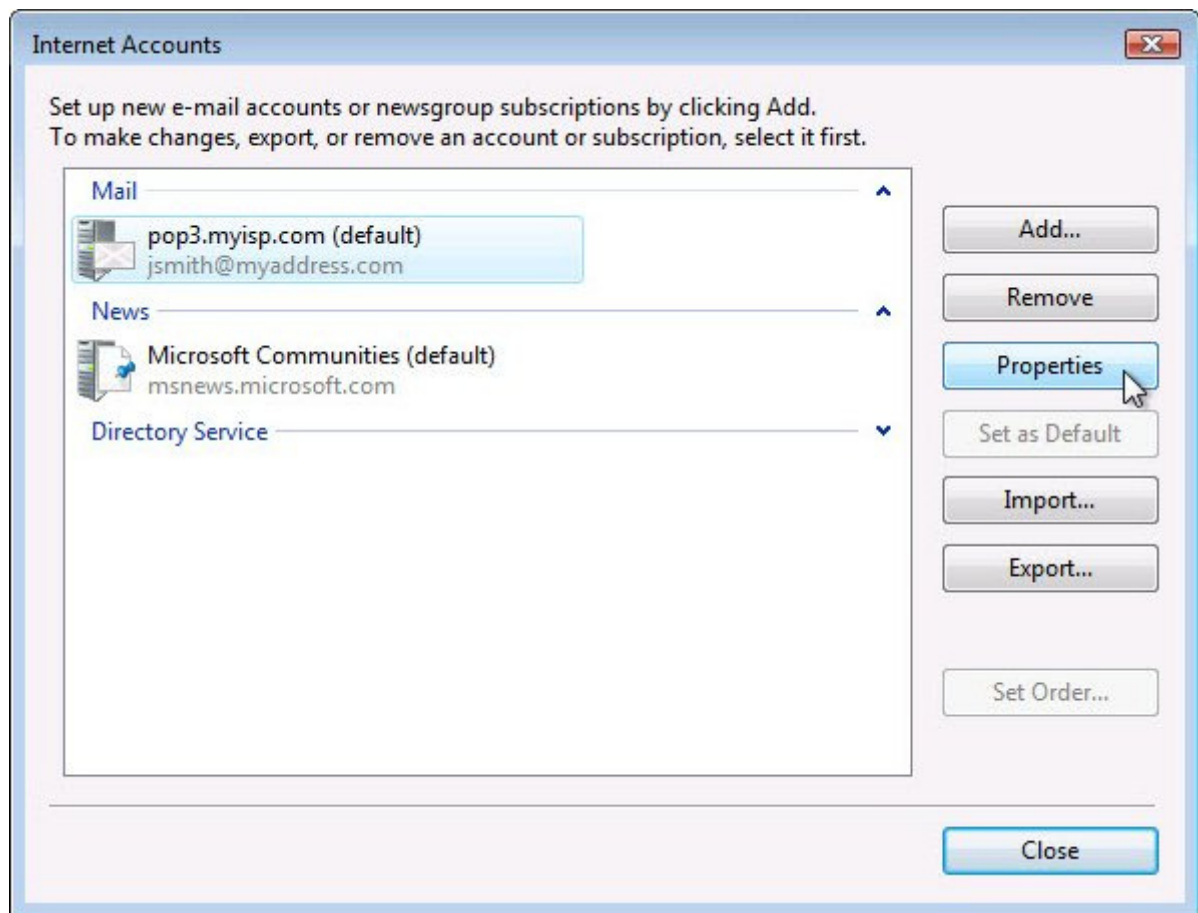
This applies to the situation where you already have a POP3 or IMAP email account setup in Windows Mail and want to change the SMTP server that this account uses to send out emails. Smarthost and SMTP (Simple Mail Transfer Protocol) server mean the same thing.

Windows Mail is the free email program included with Windows Vista and is very similar to its predecessor, Outlook Express.

Windows Mail, or an equivalent email program, is not included in Windows 7 but it's possible to run Windows Mail under Windows 7 by copying some files from a Vista computer.

Open Windows Mail and go to:-

### Tools – Accounts...



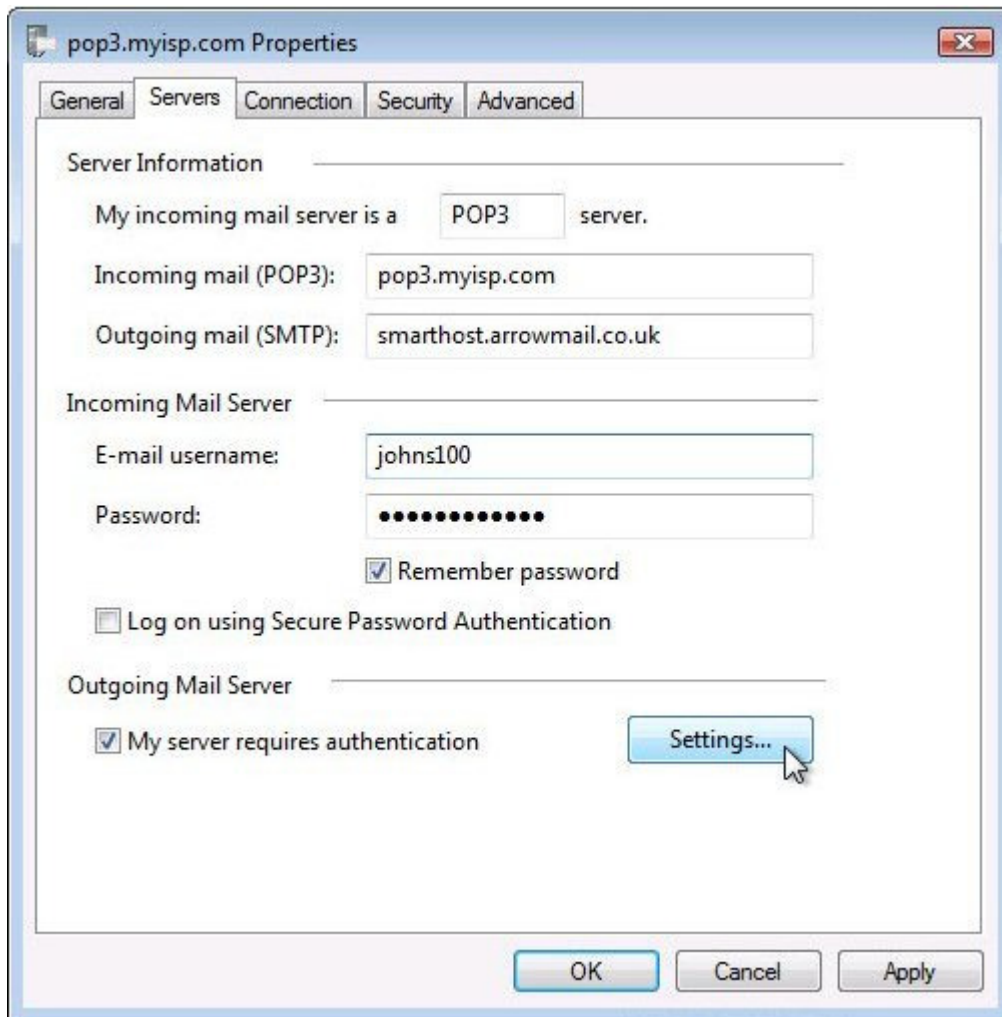
Select the account shown in the **Mail** section.

If there's more than one account listed in the **Mail** section, select the one with **(default)** at the end as this is the one used to send emails.

If you send from different accounts, in order to have different **From** addresses, you'll need to repeat the following steps for each mail account.

Click on **Properties**

Go to the **Servers** tab and change **Outgoing mail (SMTP)**: from, whatever it says now, to:-  
**smarthost.arrowmail.co.uk**



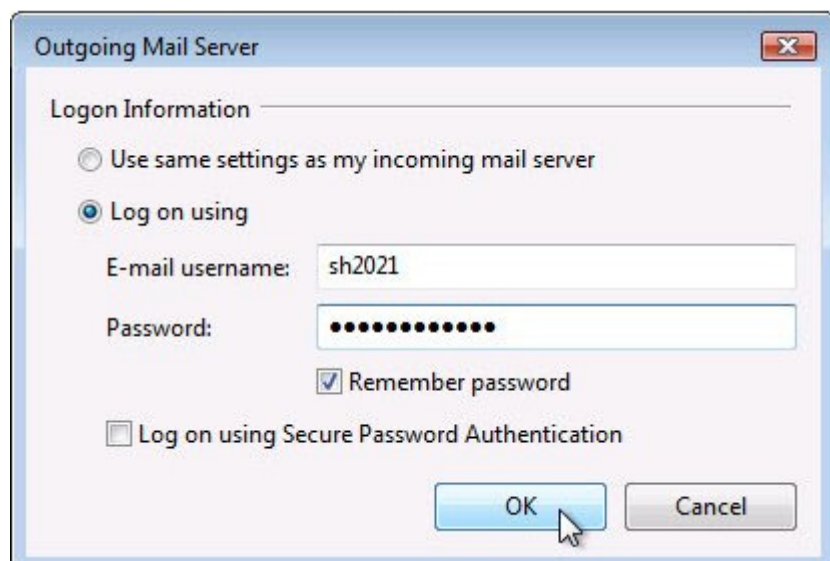
Select:- **My server requires authentication** then click **Settings...**

Select **Log on using**

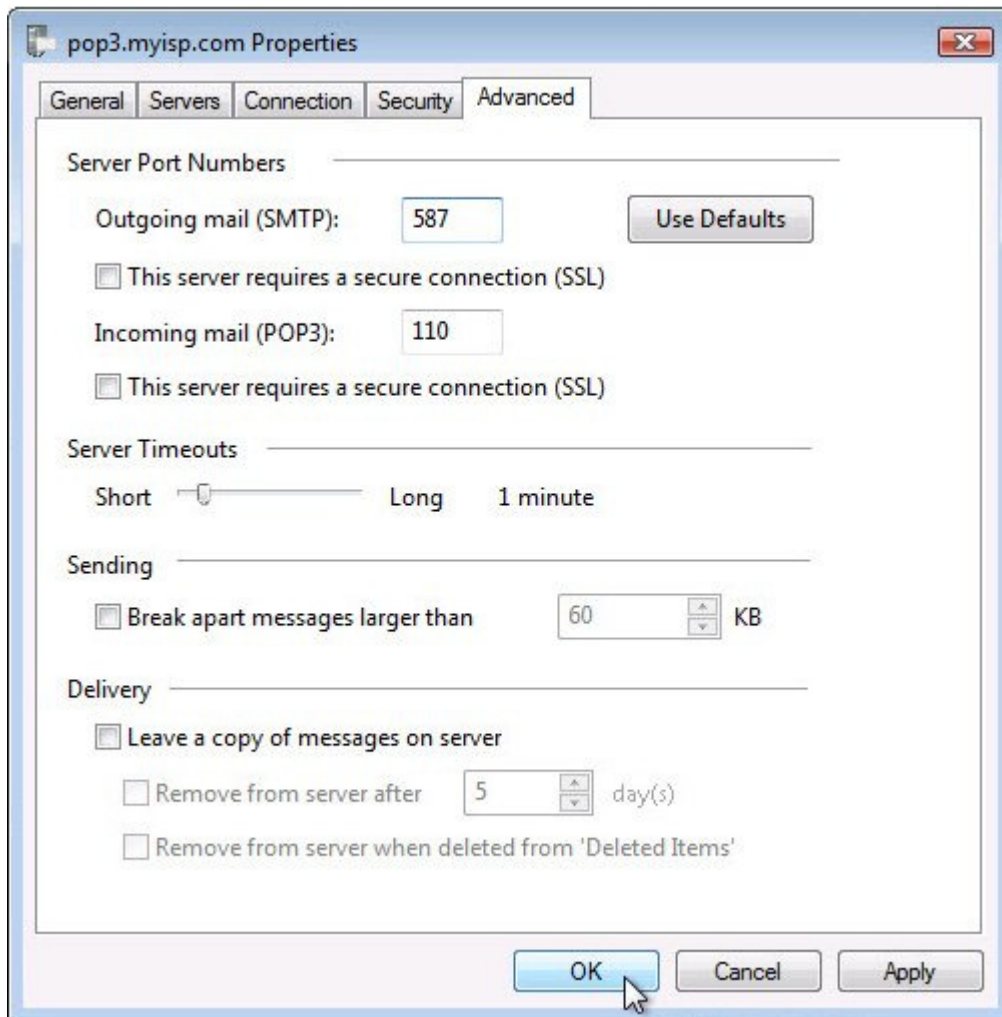
and enter the username and password that *we* have given you.

Select **Remember password**

then click **OK**



Go to the **Advanced** tab and change the Port Number for the **Outgoing mail (SMTP)**: from **25** to **587**



This step is not strictly necessary as our smarthost servers will accept connections over port 25 but some ISPs, including mobile data operators, block access to SMTP servers using port 25 except for their own server, perhaps to stop viruses on PCs sending out spam.

We recommend using port 587 to send emails as it has the best chance of working in all situations.

Click **OK** then **Close** and you're done.